

Kari Carter

Capabilities Statement



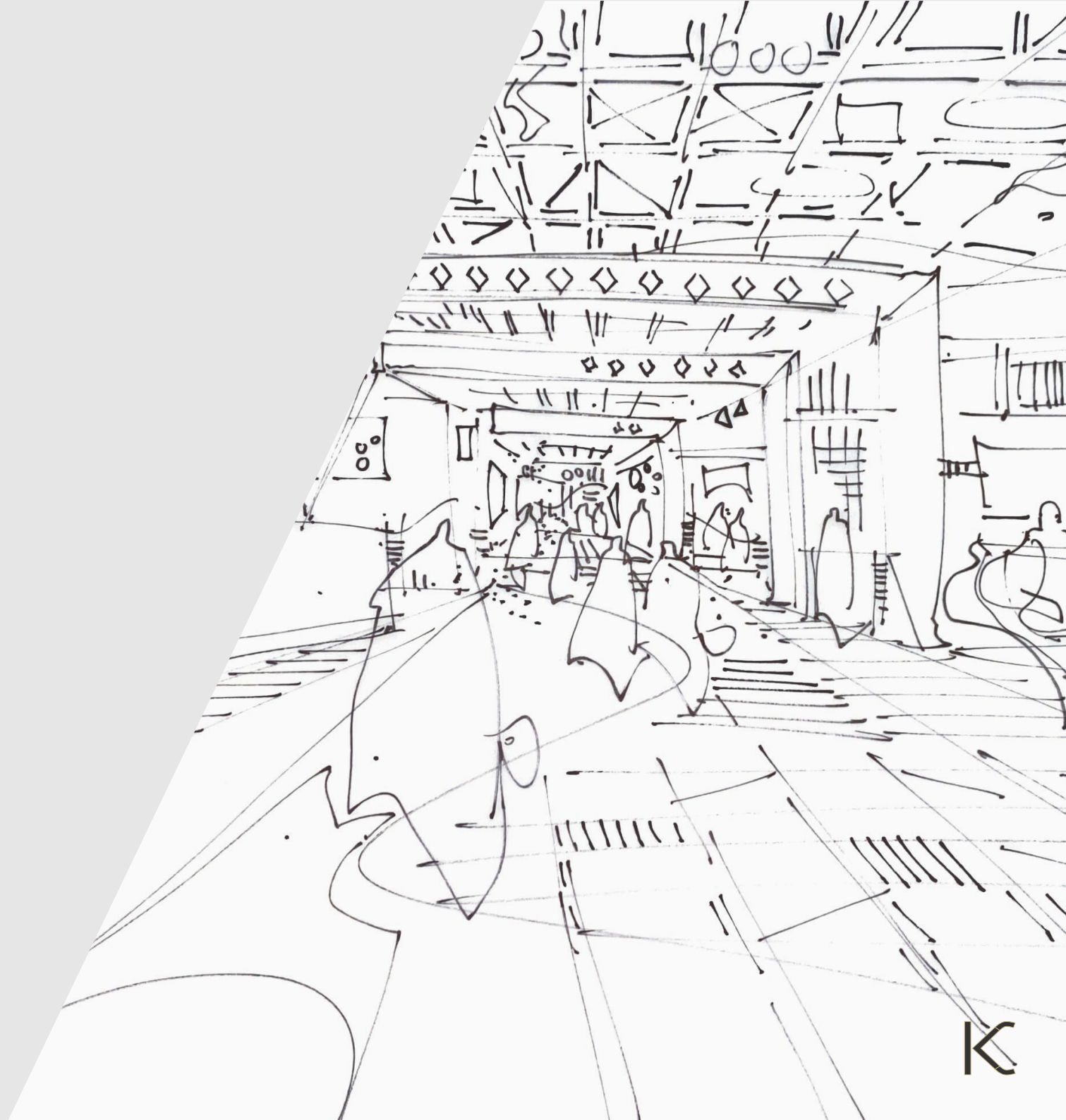
CONTENT

1. Introducing Kari Carter

About
Values
Services

2. Relevant Experience

3. Process





1. Introducing Kari Carter

ABOUT



The Studio is lead by Kari Carter, where Kari provides the creative vision, curating a wealth of experience into every interior. The design is driven by her deep passion to articulate a unique story and the inescapable need to bring form and function to spaces. To layer and embellish materials and colours, tailoring interiors to forever enhance and positively effect the user in the most subtle and profound way

Kari works closely with clients, consultants, manufacturers and suppliers to deliver interiors that exceed the aspirations of their users with an emphasis on quality and rigorous attention to detail

As a multidisciplinary designer with over 14 years of experience, Kari draws upon her knowledge from leading the design and delivery of residential, hospitality and workplace interiors ranging from 50,000-100,000sq ft and up to 16 million in value.

Kari has experience delivering complex projects and is highly skilled in process management and design translation.

Her commitment to establishing and maintaining strong client relationships, project management and team coordination ensures the delivery of great project outcomes for her clients.

Kari has worked on many key hospitality, residential and workplace projects such as Hyatt Regency (short-listed for the 'Best Hotel' FX award 2022), Hyatt House, Biggin Hill Private airport hotel, Berkeley Homes, Hewlett Packard, Sky, Booking.com

VALUES

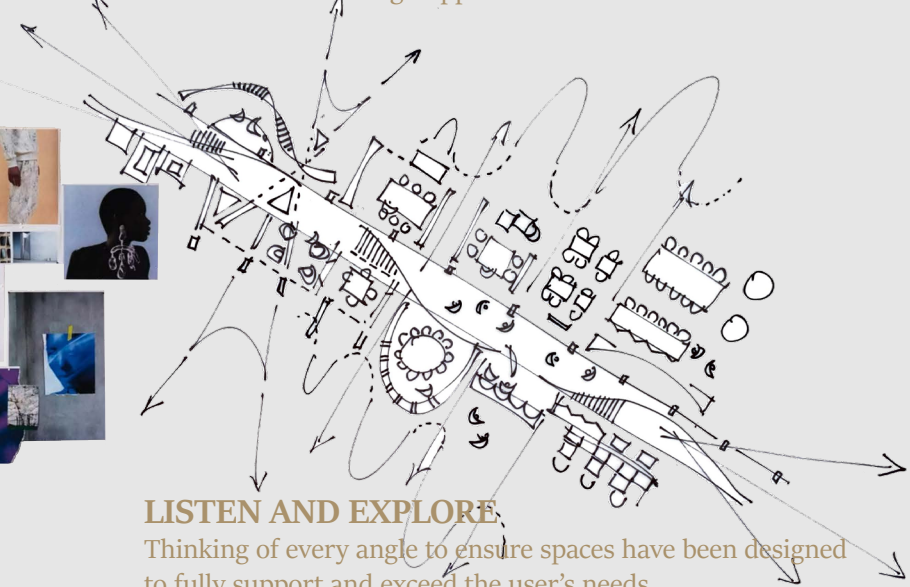
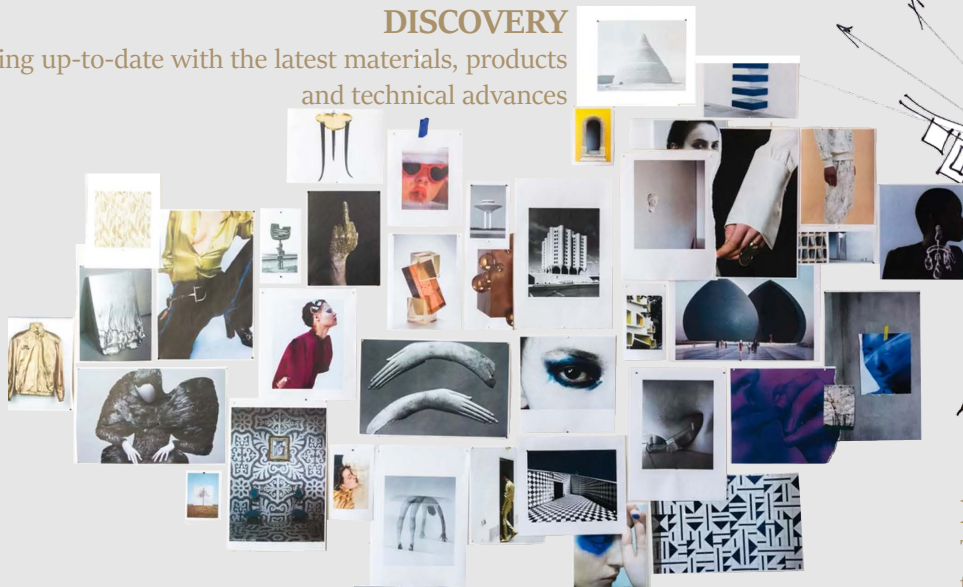


CHAMPION THE CREATIVE

Whether the budget be small or large, there's a relentless desire to maximise all design opportunities

DISCOVERY

Always keeping up-to-date with the latest materials, products and technical advances



LISTEN AND EXPLORE

Thinking of every angle to ensure spaces have been designed to fully support and exceed the user's needs

INTERIOR DESIGN SERVICES

- Test fits prior to lease/building purchase
- Space planning
- Concept design
- 3D visualisation
- Signage and manifestation
- Full technical design including bespoke joinery drawings
- Specifications and schedules
- On-site Interior Design support and supervision
- Dressing and accessorising





2. RELEVANT EXPERIENCE

Selected Projects

Hyatt House Stratford, London

Project Overview

- 18,000 sq ft
- Hotel refurbishment - new brand operator
- Concept through to completion - 2022
- Full redesign of ground floor entrance and public space
Public spaces include: reception, bar lounge, dining, breakfast buffet, gym, WCs, meeting suite and roof terrace
- Repeat Client
- Short-listed for an FX Awards 2022-'Best Hotel'



The Landing Hotel

Biggin Hill Private Airport, London

Project Overview

- 6900 sq ft
- New build amenity space and review of guest room design
- Concept through to completion - 2022
- Project scope: two story amenity space;
 - Reception
 - Bar
 - Restaurant
 - Lounge
 - WCs
 - Gym
 - Showers



Glasswater Locks

St Joseph, part of the Berkeley Group

Project Overview

- New build
- Concept and technical package
- 763 units (1,2,3 bedroom apartments)
 - The Tower - apartments
 - The Villas - apartments
 - The Works - apartments and amenity space



Glasswater Locks

St Joseph, part of the Berkeley Group

Project Overview

- New build
- Concept for extensive amenity space
 - Reception
 - Garden Room
 - Resident's Lounge
 - Library
 - Meet Suite
 - Cafe Hub
 - Games Room
 - Cinema
 - WCs
 - Lift Lobbies



Project under NDA

New Residential Development, London

Project Overview

- New build duplex penthouse
- Kitchen
Informal and formal lounges
Formal dining with bar
Study
Master bedroom and 2 guest rooms
3 bathrooms
Master dressing room
Utility room
Staircase
Internal lift

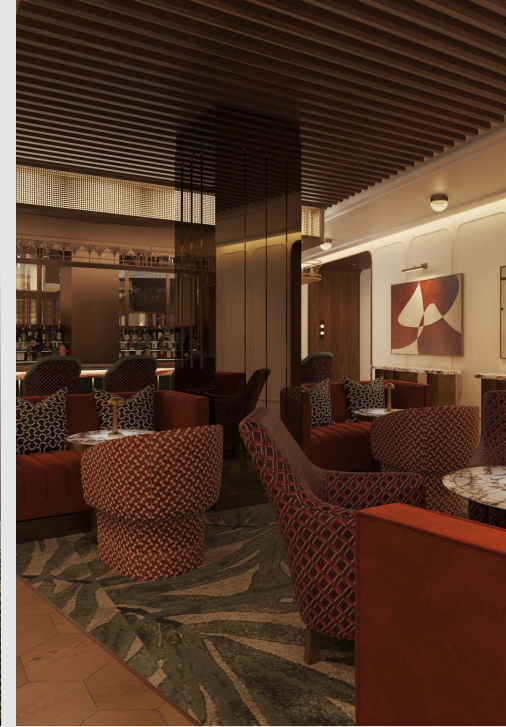


Project under NDA

New Residential Development, London

Project Overview

- New build residential amenity spaces
 - Reception
 - Library Lounge
 - Bar
 - Club Lounge
 - Drinks Library
 - Restaurant
 - Private Dining
 - Espresso Bar
 - Cinema
 - Spa - Treatment Rooms
 - Pool
 - Changing Rooms and WCs

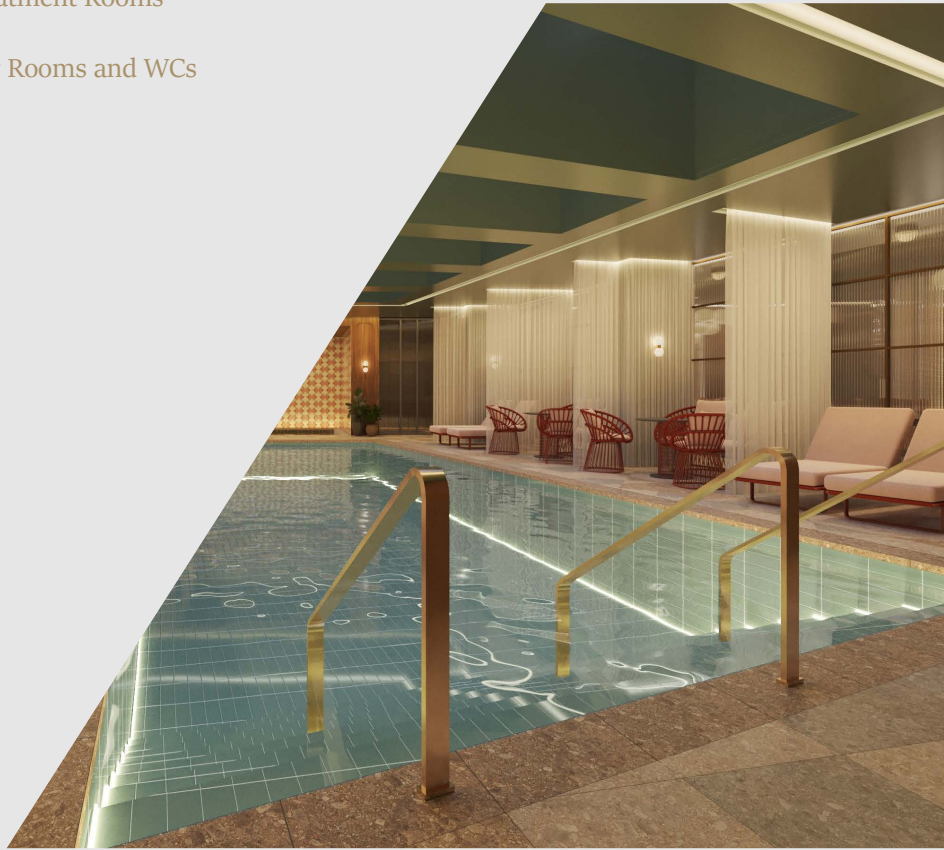


Project under NDA

New Residential Development, London

Project Overview

- New build residential amenity spaces
 - Reception
 - Library Lounge
 - Bar
 - Club Lounge
 - Drinks Library
 - Restaurant
 - Private Dining
 - Espresso Bar
 - Cinema
 - Spa - Treatment Rooms
 - Pool
 - Changing Rooms and WCs



CenturyLink (now Lumen) London

Project Overview

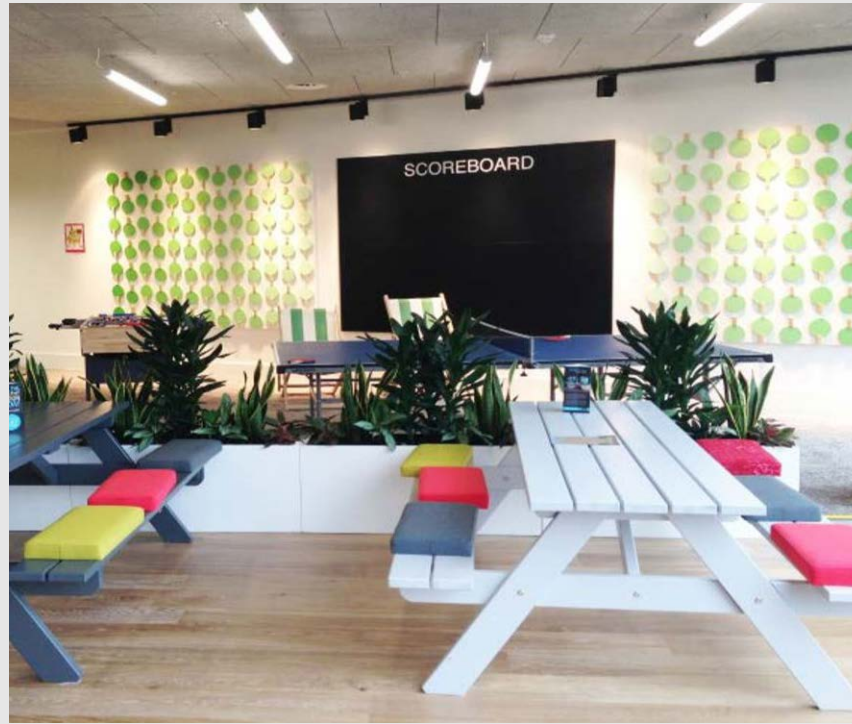
- 53,000 sq ft
- Combining real estate of two locations
- Implementation of fully agile workplace
- Full design from concept through to completion Dec 2020
- Refurbishment included:
 - New ground floor entrance to south facade
 - New lift core
 - New offices over two floors replacing data halls
 - Meet suite
 - Games room
 - Cafe Hub
 - Teapoints and Copy points
 - Showers and WCs



Booking.com South Quay, London

Project Overview

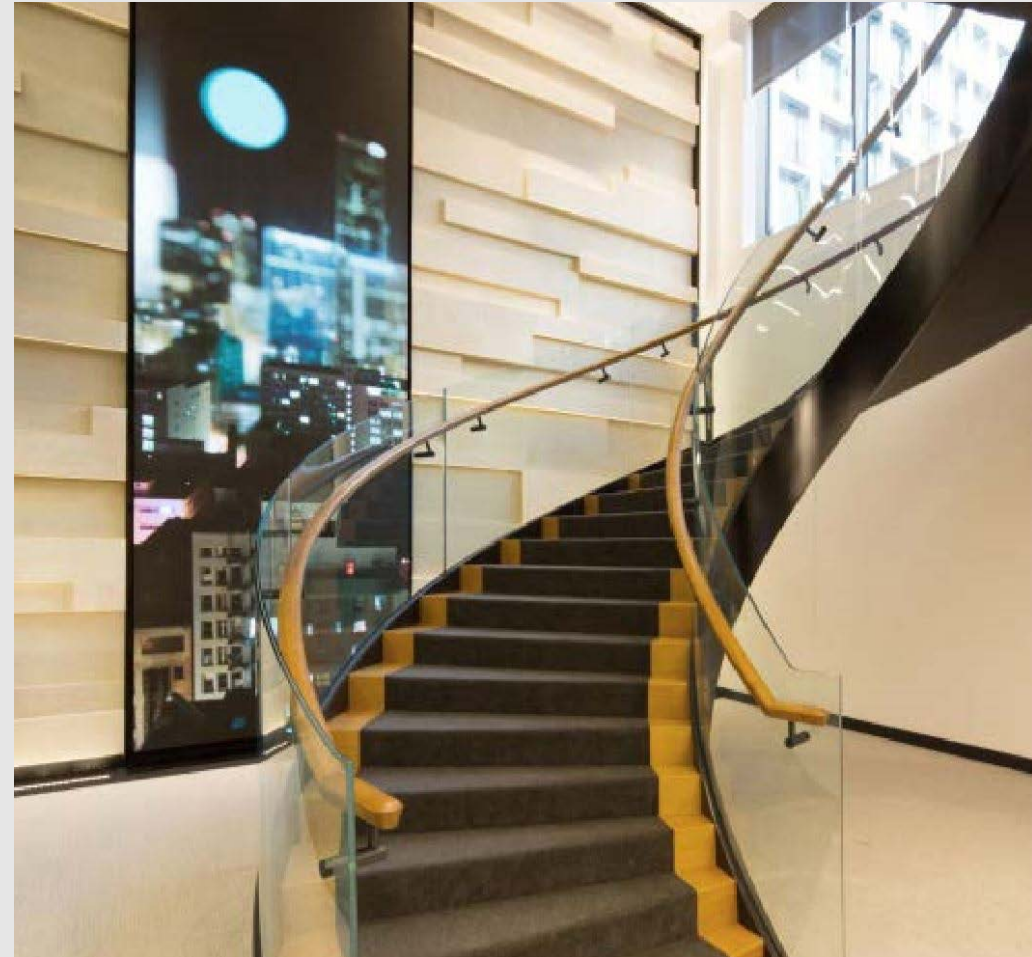
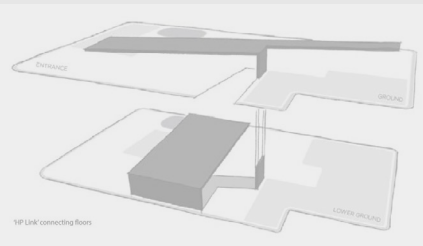
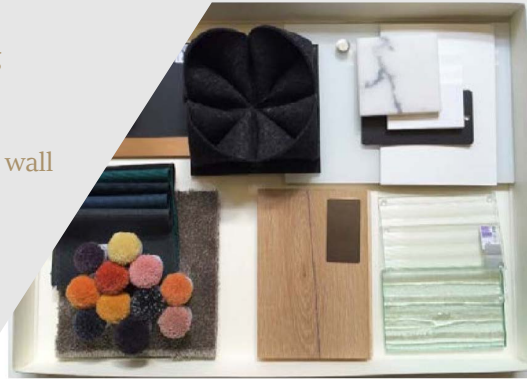
- 31,850 sq ft
- Combining real estate of two locations
- Implementation of 1:1 work settings into a fully agile workplace
- Full design from concept through to completion
- Concept driven by inspiration from London - The Silver Thread & Around the World



Hewlett Packard London

Project Overview

- 27,000 sq ft
- Design of new client experience centre includes:
 - Reception
 - Guest waiting
 - Seminar rooms
 - Presentations spaces
- Special features:
 - Metal mesh ceiling linking floors and directing users through the space
 - New spiral staircase
 - 8m high bath stone wall with integrated video wall





3. PROCESS

PROCESS



Each project has a unique personality which demands a bespoke approach. The understanding and development of your requirements and implementing gathered data into a strong concept is key to what we do. Ensuring that this remains at the heart of the scheme and is carried through from the largest to the smallest of detail.

Every element of a project is rigorously assessed and decisions are never made based on convenience.

The common themes that links our approach is that the human experiences of the environment should be central to all that is designed and that the client's initial project vision is exceeded.

In addition, aspects of the design that are addressed as standard and are key to the success of all projects include; intuitive way-finding, in-built future proofing to acknowledge that people and technology are forever evolving and the living, work and play environments need to be able to flex to facilitate this.

PROCESS & RISKS

Discover

- Initial meeting and workshop with client team to gain direct brief and holistic understanding of the project
- Discuss project objectives, deliverables, programme and budget
- Identify the project vision and understand needs of the client
- Research the site and local context to help inform the design process

Design

- Evaluate property options (if required) with test fits
- Translate project vision and objectives with consultant team such as structures, mechanical and electrical
- Create space plans and look and feel imagery

Refine

- Undergo schematic planning. Design 3D views, incorporate materials and furniture. Collaborate with the client and coordinate with the consultant team throughout
- Refine the design and produce elevations, renders, CGIs as agreed with client
- Create a detailed design and construction package

Deliver

- Collaborate with consultants and construction team
- Monitor site construction and quality control
- Assist contractor where required to ensure that the interiors align with the project vision
- Collaborate with design teams such as joinery companies. Review and endorse prototypes and samples
- Inspect site during construction phase and upon completion
- Celebrate the successful opening!

CONTACT DETAILS

Email: k.carter@karicarter.com

Mobile: 07583668697

Website: www.karicarter.com